

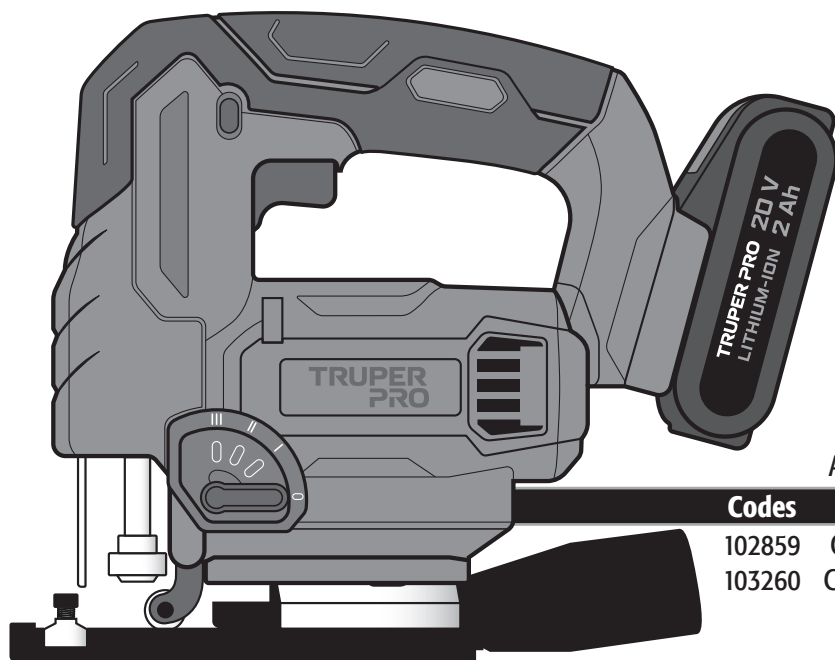
ENGLISH
ESPAÑOL

TRUPER PRO

Manual

Cordless variable speed jig saw

20 V 
Voltage



Applies for:

Codes	Models
102859	CALI-20A
103260	CALI-20AS

CALI-20A CALI-20AS

 **CAUTION**



Read this manual
before using the tool.



Technical datas	3
Power requirements	3
 General safety warnings for electric tools	4
 Safety warnings for the use of cordless jigsaws	5
Parts	6
Start up	7
Maintenance	10
Troubleshooting	11
Notes	12
Authorized service centers	13
Warranty policy	14




CAUTION

To get the most out of the tool, extend its lifespan, claim the warranty if necessary, and avoid serious risks or injuries, please read this manual thoroughly before using the tool.

Please keep this manual for future references

The illustrations in this manual are for only and may differ from the real appearance of the tool.

Use and care recommendations.

-  Use the provided charger or the one suggested by **TRUPER** to charge the battery.
-  Always keep the vents free from obstruction to ensure proper cooling of the engine.
-  Perform regular **MAINTENANCE** on your machine (page 10).

Technical data

TRUPER PRO

CALI-20A

CALI-20AS

Code	102859	103260
Description	Cordless variable speed jig saw	
Voltage	20 V ---	
Miter cutting	0° - 45° both sides	
Speed	0 strokes/min – 2500 strokes/min	
Cutting capacity	Wood 3 1/4" Steel 5/16"	
Stroke length	3/4"	
Battery	20 V --- Li-ion – 2 Ah Charging time: 90 min approx.	NOT INCLUDED
Charger	Inlet: Voltage: 127 V ~ Frequency: 60 Hz Current: 55 W Outlet: 11 V --- – 21 V --- 2 A	NOT INCLUDED

The power cable has cable clamps of the type: Y.
The construction class of the tool is: Class III.
The construction class of the charger is: Reinforced insulation.

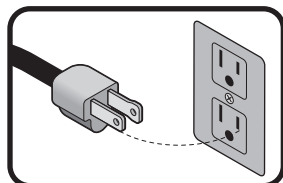
⚠ WARNING If the power cable is damaged, it must be replaced by the manufacturer or a TRUPER Service Center to prevent any risk of electric shock or significant accident. The electrical insulation of this tool is compromised by splashes or spillage of liquids during its operation. Do not expose it to rain, liquids, and/or moisture

⚠ WARNING Before accessing the terminals, all power circuits must be disconnected.



Power Requirements

⚠ WARNING Double insulated tools are equipped with a polarized plug (one prong is wider than the other). This plug fits into any polarized outlet and can only be inserted one way. If the plug does not fit into the outlet, flip it over. If it still does not fit, contact a qualified electrician, or install a polarized outlet. Do not alter the plug in any way. Double insulation eliminates the need for a three-pronged grounded power cord or a grounded electrical system.



⚠ WARNING When using an extension cord, make sure to use a sufficient gauge to carry the current your tool will consume. A lower gauge cable will cause voltage drops in the line, resulting in power loss and overheating. The following table shows the correct size to be used depending on the cable length and the amperage capacity indicated on the tool's data plate. If in doubt, use the next higher gauge.

Capacity in Amperes	Number of conductors	Extension gauge	
		from 1.8 m to 15 m	higher than 15 m
from 0 A to 10 A	3 (one to ground)	18 AWG(*)	16 AWG
from 10 A to 13 A		16 AWG	14 AWG
from 13 A to 15 A		14 AWG	12 AWG
from 15 A to 20 A		8 AWG	6 AWG

* It is allowed to use it if the extensions themselves have an overcurrent protection device.

AWG = American Wire Gauge. Reference: NMX-J-195-ANCE.

⚠ WARNING When operating electric tools outdoors, use a grounded extension cord marked as **6 VOLTECK** 'Outdoor Use'. These extensions are specially designed for outdoor use and reduce the risk of electric shock.





⚠ WARNING! Read all safety warnings and all instructions listed below carefully. Failure to follow any of them may result in electric shock, fire, and/or serious injury. **Keep the warnings and instructions for future reference.**

Work area

Keep your work area clean, organized, and well-lit.

Cluttered and dim areas can lead to accidents.



Do not operate the tool in explosive atmospheres, such as in the presence of flammable liquids, gas, or dust.

The electric tools produce sparks that can ignite flammable material.



Keep children and other individuals at a safe distance while using the equipment.

Distractions can cause loss of control and lead to accidents.



Electric safety

Electrical tool plugs must match the outlet.

Never modify the plug in any way.

Do not use adapters with grounded electrical tools.

Unmodified electrical tools and matching plugs will reduce the risk of electric shock.



Avoid bodily contact with grounded surfaces, such as pipes, radiators, stoves, and refrigerators.

There is an increased risk of electric shock if your body is grounded.

Water entering an electrical tool will increase the risk of electric shock.

The entry of water into an electrical tool will increase the risk of electric shock.

Do not force the cable. Never use the cable for carrying, lifting, or disconnecting the tool. Keep the cable away from heat, oil, sharp edges, or moving parts.

Damaged or tangled cables increase the risk of electric shock.

If it is unavoidable to operate an electrical tool in a damp location, use a power source protected by a Residual Current Device (RCD).

The use of a Residual Current Device (RCD) reduces the risk of electric shock.

When operating an electrical tool outdoors, use an extension cord suitable for outdoor use.

The use of a suitable outdoor-rated cable reduces the risk of electric shock.

Personal Safety

Be alert, watch what you are doing, and use common sense when handling a tool. Do not use it if you are tired or under the influence of drugs, alcohol, or medication.

A moment of distraction while using the tool can cause personal injury.

Use safety equipment. Always wear eye protection.

The use of safety equipment such as safety glasses, dust mask, slip-resistant shoes, helmet, and ear protection in appropriate conditions significantly reduces the risk of personal injury.



Avoid accidental starts. Ensure the switch is in the "off" position before connecting to the power source and/or the battery or transporting the tool.

Carrying power tools with your finger on the switch or connecting power tools with the switch in the "on" position can cause accidents.

Remove any wrenches or adjusting tools before starting the power tool.

Wrenches or tools left on the rotating parts of the tool can cause personal injury.

Do not exceed your range of motion. Keep both feet firmly planted on the ground and always maintain balance.

This allows better control of the tool in unexpected situations.

Dress appropriately. Do not wear loose clothing or jewelry. Keep your hair, clothing, and gloves away from moving parts.

Loose clothes, jewelry, or long hair may get caught in moving parts.



If dust extraction and collection devices are available for the tool, check their connections and use them correctly.

The use of these devices reduces risks associated with dust.

Tool use and care

Do not force the tool. Use the appropriate tool for the task at hand.

The right tool performs better and is safer when used at the intended pace.

Do not use the tool if the switch is not functioning.

Any power tool that cannot be turned on or off is dangerous and must be repaired before operation.



Disconnect the tool from the power source and/or battery before making any adjustments, changing accessories, or storing it.

These measures reduce the risk of accidentally starting the tool.

Store the tools out of the reach of children and do not allow them to be handled by individuals unfamiliar with the tools or their instructions.

Power tools are dangerous in untrained hands.



Maintain the tool. Ensure that the moving parts are not misaligned or jammed, and that there are no broken parts or other conditions that may affect its operation. Repair any damage before using the tool.



Many accidents are caused by inadequate tool maintenance.

Keep cutting accessories sharp and clean.

Well-maintained cutting accessories are less likely to jam and easier to control.

Use the tool, its components, and accessories in accordance with these instructions and as intended for the type of tool, in appropriate working conditions.

Using the tool for applications other than those for which it is designed could cause a hazardous situation.

Use and Care of the battery-powered Tool

Only recharge with the charger specified by TRUPER.

The charger included with the machine may pose a fire hazard if used with another battery.

Use batteries specifically designed for the tool.

The use of any other battery may pose a risk of damage and fire.

General safety warnings for electric tools



TRUPER PRO

Make sure the switch is in the off position before inserting the battery.

Inserting the battery into electric tools with the switch on can cause issues.

When batteries are not in use, keep them away from other metallic objects such as paper clips, coins, keys, nails, screws, or other small metallic objects that may create a connection from one terminal to another.

Short-circuiting between battery terminals can cause burns or fires.

In abusive conditions, battery liquid may be expelled; avoid contact. If accidental contact occurs, rinse with water.

If the liquid meets the eyes, seek medical assistance. The liquid expelled by the battery can cause irritation or burns.

Service

Send your electric tool for repair to trained personnel using only identical replacement parts.

This will ensure the safety of the electric tool is maintained.

Safety warnings



for the use of cordless jigsaws



Batteries and charger

⚠ DANGER • Use only the included TRUPER charger to charge the tool battery. Using another charger can cause fire or injury risks.

⚠ DANGER • Use only batteries specifically designed for the tool. Other batteries may pose injury or fire risks.

⚠ DANGER • Connect the charger only to an alternating current (AC) power supply.

⚠ DANGER • Do not use the charger outdoors.

- Respect the polarity "+/-" when charging.
- Never recharge a leaking battery.
- Do not use batteries or the charger for purposes other than what they were designed for.
- Do not modify the battery or charger contacts.
- Never expose batteries to temperatures above 122 °F

⚠ DANGER • Never expose batteries to fire, they could explode.

⚠ CAUTION • Keep batteries away from any metal objects such as clips, coins, keys, nails, screws, or any other object that could cause the terminals to make contact as it could cause a short circuit that could lead to burns or fires.

⚠ CAUTION • Under extreme conditions, battery fluid may spill. If this happens, avoid any contact. If accidental contact occurs, wash with plenty of water, rinse with lemon juice and vinegar. If the liquid meets eyes, rinse with plenty of water for several minutes and seek immediate medical attention. The expelled battery fluid could cause irritation or burns.

⚠ CAUTION • To maximize battery life, discharge it completely at least once a month. Do not leave the battery undercharged for more than three months. Always charge the battery to its maximum capacity. Before using the machine for the first time, charge the battery for a minimum of 55 minutes.

• Avoid constant stopping while drilling or screwing to prevent damage to the battery.

Before operating the jigsaw

⚠ DANGER • Always check walls, floors, and ceilings to avoid contact with electrical wires and/or piping.

⚠ CAUTION • Ensure that the base is securely supported on the material during cutting. A stuck jigsaw blade can break or cause kickback.

⚠ CAUTION • Use only new jigsaw blades. Bent or dull blades can break, negatively affect the cut, or cause kickback.

⚠ CAUTION • Secure the workpiece. A workpiece held with clamps or in a vise is safer than holding it by hand.

⚠ CAUTION • This cordless jigsaw is for manual use. Do not fix it.

While operating the jigsaw

⚠ CAUTION • Hold the power tool by the insulated gripping surfaces when performing an operation where the cutting accessory may contact hidden electrical cables. If the cutting accessory meets a "live" cable, the exposed metal parts of the power tool can become charged and give an electric shock to the operator.

⚠ WARNING • Keep hands away from the cutting area. Do not pass your hand under the workpiece. Contact with the jigsaw blade can cause injuries.

⚠ CAUTION • Bring the machine to the workpiece only when it is turned on. Otherwise, there is a kickback danger when the cutting tool gets stuck to the workpiece.

• When making cuts in metal, always use a cooling material (e.g., oil or water) to prevent overheating of the tool or workpiece.



Laser radiation

⚠ WARNING • Laser class 2. Do not look directly at the laser beam or the opening from which it emerges. • Never aim the laser beam towards people, animals, or reflective surfaces. Even brief eye contact can cause eye damage.

⚠ ADVERTENCIA • Examining the laser output opening using optical instruments (e.g., magnifying glasses and similar) carries the risk of eye damage.

⚠ ATENCIÓN • When working with a class 2 laser, observe national regulations regarding the use of eye protection.

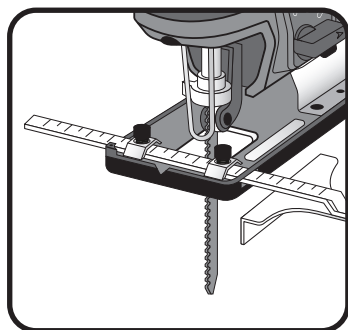
After operating the jigsaw

⚠ WARNING • Metal parts and accessories may be hot if the tool is used for prolonged periods.

⚠ CAUTION • Do not stop the jigsaw by applying lateral pressure after turning it off. The jigsaw blade can be damaged, break, or cause kickback.

⚠ CAUTION • Once the cut is complete, turn off the machine and then remove the jigsaw blade from the workpiece once it has completely stopped. This way, you can avoid kickback and safely lower the machine.

⚠ CAUTION • Remove the jigsaw blade from the cut only when it has stopped moving.



Safety warnings

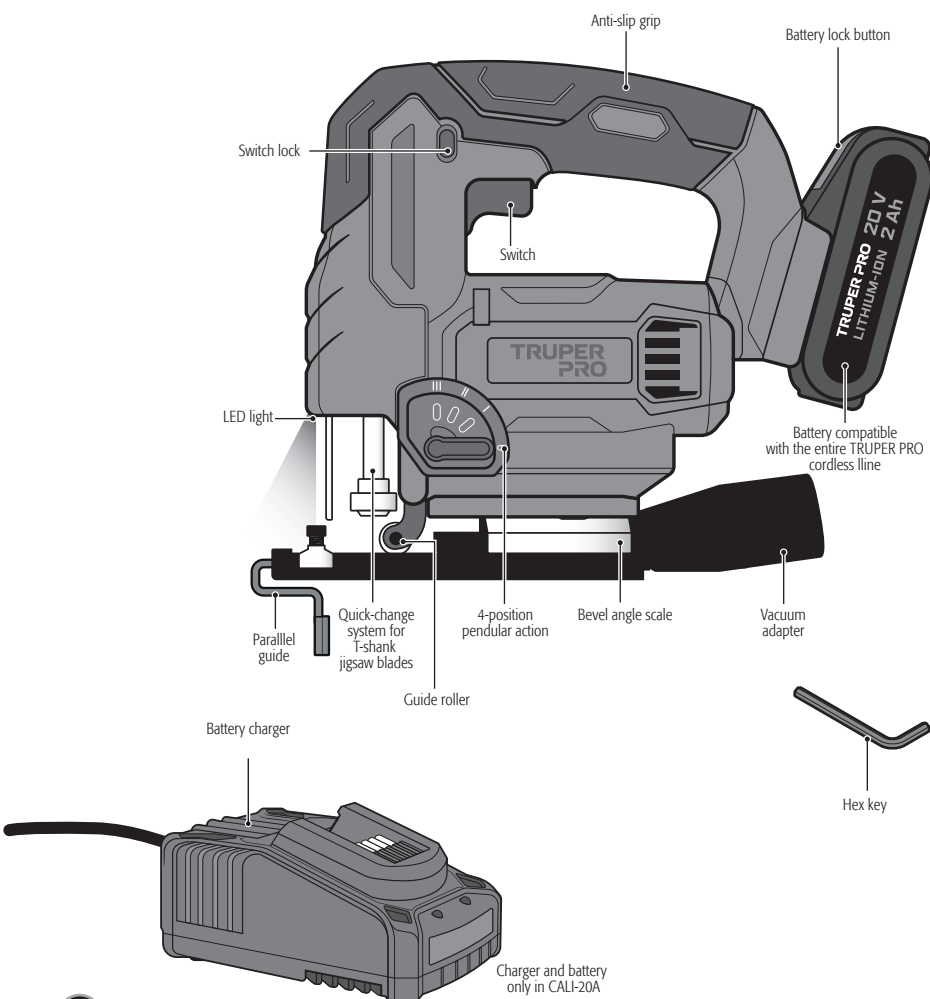
! for the use of cordless jigsaws **⚡**

Blade replacement

⚠ CAUTION Wear gloves when installing the jigsaw blade. Risk of injury when touching the jigsaw blade.

- Use only saw blades that match the specifications provided in the operating instructions.

Parts



Battery usage considerations

- Batteries come DISCHARGED from the factory. It will be necessary to charge them for approximately 55 minutes before using them.
- The normal charging temperature is 32 °F to 113 °F. Charging is automatically suspended outside this range until the correct temperature is reached. The normal discharge/operating temperature is 32 °F to 167 °F. If 167 °F is exceeded, the electronic control shuts off the tool's power until the temperature returns to

the optimal temperature range.

When the battery is below normal voltage during operation, the tool stops working.

- Allow the charger 15 minutes of rest between each charge. In warm environments or after prolonged use, the battery may become too hot to recharge. Allow the battery to cool before attempting to recharge it.

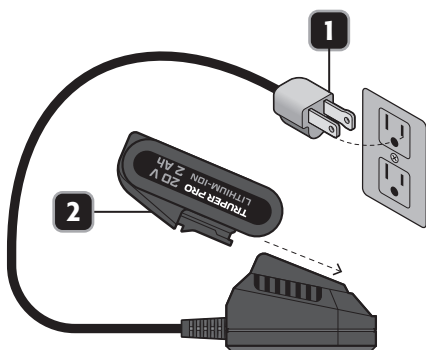
Battery charging

1. Plug the charger into a 127 V~ outlet (The green light on the charging indicator will turn on).
2. Insert the battery into the charger by sliding it in. The green light will turn off, and the red light should turn on, indicating that the charging has started.
3. When the battery is fully charged, the green light will turn on again, and the red light will turn off.
4. Disconnect the charger from the power once the charging is complete.

BATTERY FAULTS

If the green light blinks, it indicates that the battery's temperature is below 32 °F or above 113 °F.

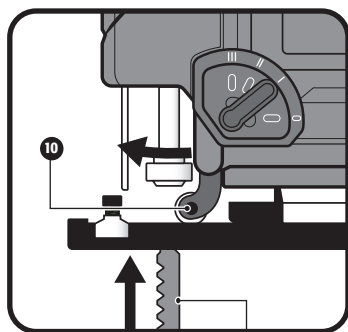
Wait for the battery's temperature to be within the appropriate range before attempting to charge it.



Blade installation

CAUTION Make sure the blade holder is free from material residue (such as wood chips or metal shavings).

- Turn the clamping lever to the left and keep it there.
- Insert the blade into the holder until it stops. Ensure that the blade is securely held and that the teeth are pointing in the cutting direction.
- Release the clamping lever. Verify that the back of the blade is positioned in the center of the guide roller (10).



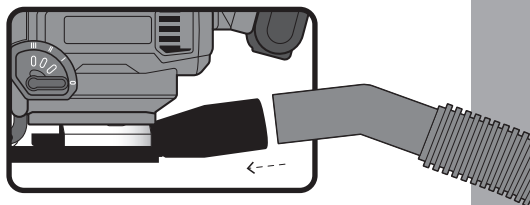
CAUTION Ensure that you use the appropriate jigsaw blade for the corresponding material. The machine comes with a thick blade for wood.

- To remove a blade, hold it and turn the blade holder ring clockwise (jigsaw upside down), then lift the blade (the blade may spring out).

It is recommended to use TRUPER "T"-shank jigsaw blades.

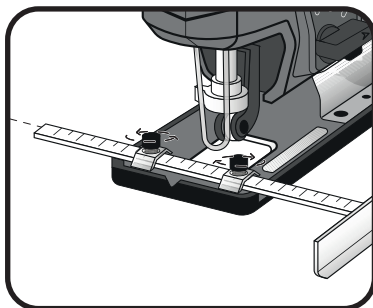
Dust extraction

- Insert the vacuum adapter into the machine's shoe. With the adapter assembled, proceed to attach the vacuum nozzle to the adapter.



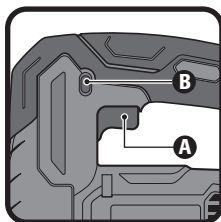
Parallel guide installation

- Loosen the screws using a crosshead screwdriver (not included).
- Mount the parallel guide on the base.
- Adjust the desired cutting width using the scale on the parallel guide.
- Tighten the screws to secure the parallel guide.



Start up and operation

- Press and hold the switch lock (B) to unlock the switch (A). The switch lock prevents accidental starts.
- Press the switch (A) to start the machine.
- To stop the tool, release the switch (A).

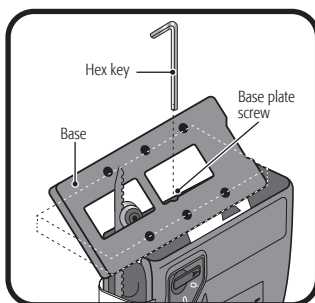


Variable speed

- The switch allows you to select the appropriate speed for each task. The more you press the switch, the faster the jigsaw will operate.

Bevel angle adjustment

- Loosen the allen screws using the included hex key.
- Adjust the base to the desired angle (0°- 45°).
- The cutting angle (bevel) can be read on the scale.
- Tighten the screw with the hex key. The hex key can be stored on the machine.



Pendulum action adjustment

The pendulum action varies the cutting angle of the jigsaw to increase cutting efficiency. It should be adjusted with the jigsaw unloaded. The pendulum action switch can be adjusted in 4 positions:

- 0 - No pendulum action
- I - Small pendulum action
- II - Medium pendulum action
- III - Large pendulum action

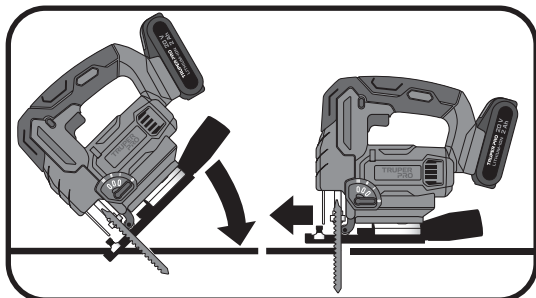
- Thin materials, fine cuts, and tight curves: set the pendulum to level 0.
- Hard materials (steel and particle board): set the pendulum to level I.
- Thick materials (wood and plastic): set the pendulum to level II.
- Quick cuts (softwood): set the pendulum to level III. Cut in the direction of the wood grain.

⚠ WARNING The machine is intended for sawing wood, plastic, metal, and construction materials when firmly placed on the workpiece. It is suitable for straight and curved cuts with bevel angles of up to 45°. Follow the recommendations of the saw blade.

Flush cutting

⚠ WARNING Flush cutting should only be used on soft materials such as wood, cellular concrete, plasterboard, etc.

- Place the saw on the workpiece and turn it on.
- Ensure that the bottom edge of the base plate rests on the workpiece surface.
- Cut slowly by moving the saw to a vertical position and continue cutting along the cutting line.
- Turn off the saw and remove the workpiece when finished.



Laminate cutting

- Use a fine-toothed blade when cutting most laminates and thin wood materials.
- To reduce chipping on edges, clamp pieces of scrap wood at both ends and cut through them.

Cutting circles

- Do not use the pendulum action when cutting circles or tight angles.

Steel cutting

- Use a finer-toothed blade for ferrous metals and a coarser-toothed blade for non-ferrous metals.
- When cutting thin metal sheets, place wood on both sides to reduce vibration or tearing of the metal sheet.
- Both the wood and the metal sheet should be cut.
- Do not force the cutting blade when cutting thin metal or steel sheet, as they are harder materials and will take longer to cut. Excessive force on the blade can reduce its lifespan or damage the motor.
- To reduce heat during metal cutting, add a little lubricant along the cutting line.

⚠ WARNING Before cleaning and performing maintenance, always turn off the machine and remove the battery from the machine.

Cleaning and care

- Regularly clean the machine housings with a soft cloth, preferably after each use.
- Ensure that the ventilation openings are free from dust and dirt.
- Remove dirt using a soft cloth dampened with soapy water.

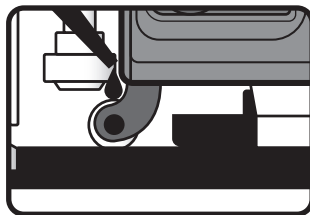
- Do not use solvents such as gasoline, alcohol, ammonia, etc. These chemicals can damage synthetic components.
- Periodically check the battery for any damage. If damaged, have the battery replaced at a TRUPER Authorized Service Center.

Service

Tool servicing should only be carried out at an Authorized TRUPER Service Center.
Service and maintenance performed by unqualified persons can be dangerous and may result in personal injury as well as voiding the product warranty.

Lubrication

- Regularly apply a drop of lubricant to the guide roller for proper jigsaw sliding while cutting.



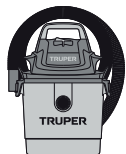
Environment

⚠ WARNING Defective or discarded electrical or electronic devices should be collected at appropriate recycling locations.

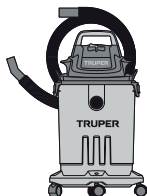
Compatible with



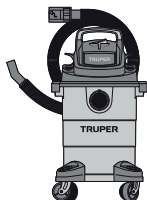
CALI-20A



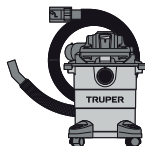
ASP-03



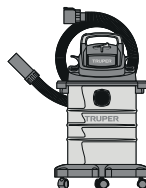
ASP-04



ASP-06



ASP-5S



ASP-5X

Problem	Cause	Corrective action
The jigsaw loses power.	<ul style="list-style-type: none"> • Low battery. 	<ul style="list-style-type: none"> • Charge the battery.
The trigger cannot be pressed.	<ul style="list-style-type: none"> • The switch lock is not engaged. 	<ul style="list-style-type: none"> • Press and hold the switch lock to be able to activate the power button.
The trigger can be pressed but the machine does not work.	<ul style="list-style-type: none"> • Battery discharged. 	<ul style="list-style-type: none"> • Charge the battery.
The battery is leaking.	<ul style="list-style-type: none"> • A slight drip may occur in extreme temperatures or after heavy use; this is normal. • Intense or very noticeable dripping is due to a damaged battery. 	<ul style="list-style-type: none"> • Immediately clean any liquid from the skin or clothing with water and soap. • Replace the battery immediately.
The battery does not charge, and the charge level indicator light does not turn on.	<ul style="list-style-type: none"> • Charger connection improperly installed on the battery. • Charger improperly connected to the power outlet. 	<ul style="list-style-type: none"> • Properly insert the charger connection into the battery. • Ensure that the charger plug is properly connected to the power outlet.
The saw heats up after long periods of work.	<ul style="list-style-type: none"> • This heating is normal as it absorbs energy from the motor gears and electricity generated during work. 	<ul style="list-style-type: none"> • Allow it to cool down in intervals of 5 minutes.
The battery heats up during operation..	<ul style="list-style-type: none"> • This heating is normal; the energy extracted from the battery while the jigsaw is running causes it to heat up. 	<ul style="list-style-type: none"> • Stop the jigsaw for intervals of 5 minutes to allow the battery to cool down.
The battery heats up during charging.	<ul style="list-style-type: none"> • This heating is normal, a result of the chemical reactions that occur inside the battery during charging. 	
The charger heats up during charging.	<ul style="list-style-type: none"> • This heating is normal, a result of voltage regulation. 	



In the event of any problem contacting a Service Center, please see our webpage WWW.TRUPER.COM to get an updated list, or call our toll-free numbers 800 690-6990 or 800 018-7873 to get information about the nearest TRUPER Authorized Service Center.

AGUASCALIENTES **DE TODO PARA LA CONSTRUCCIÓN**
GRAL. BARRAGÁN #1201, COL. GREMIAL, C.P. 20030,
AGUASCALIENTES, AGS. TEL.: 449 994 0537

BAJA CALIFORNIA **SUCURSAL TIJUANA**
AV. LA ENCANTADA, LOTE #5, PARQUE INDUSTRIAL
EL FLORIDO II, C.P. 22244, TIJUANA, B.C.
TEL.: 664 969 5100

BAJA CALIFORNIA SUR **FIX FERRETERÍAS**
FELIPE ÁNGELES ESQ. RUIZ CORTÍNEZ S/N, COL. PUEBLO
NUEVO, C.P. 23670, CD. CONSTITUCIÓN, B.C.S.
TEL.: 613 132 1115

CAMPECHE **TORNILLERÍA Y FERRETERÍA AAA**
AV. ÁLVARO OBREGÓN #324, COL. ESPERANZA
C.P. 24080 CAMPECHE, CAMP. TEL.: 981 815 2808

CHIAPAS **FIX FERRETERÍAS**
AV. CENTRAL SUR #27, COL. CENTRO, C.P. 30700,
TAPACHULA, CHIS. TEL.: 962 118 4033

CHIHUAHUA **SUCURSAL CHIHUAHUA**
AV. SILVESTRE TERRAZAS #128-11, PARQUE INDUSTRIAL
BAFAR, CARRETERA MÉXICO CUAUHTÉMOC, C.P. 31415,
CHIHUAHUA, CHIH. TEL. 614 434 0052

CIUDAD DE MÉXICO **FIX FERRETERÍAS**
EL MONSTRUO DE CORREGIDORA, CORREGIDORA # 35,
COL. CENTRO, C.P. 06060, CUAUHTÉMOC, CDMX.
TEL: 55 5522 5031 / 5522 4861

COAHUILA **SUCURSAL TORREÓN**
CALLE METAL MECÁNICA #280, PARQUE INDUSTRIAL
ORIENTE, C.P. 27278, TORREÓN, COAH.
TEL.: 871 209 68 23

COLIMA **BOMBAS Y MOTORES BYMTESA DE MANZANILLO**
BLVD. MIGUEL DE LA MADRID #190,
COL. 16 DE SEPTIEMBRE, C.P. 28239, MANZANILLO, COL.
TEL.: 314 332 1986 / 332 8013

DURANGO **TORNILLOS ÁGUILA, S.A. DE C.V.**
MAZURIO #200, COL. LUIS ECHEVERRÍA, DURANGO,
DGO. TEL.: 618 817 1946 / 618 818 2844

ESTADO DE MÉXICO **SUCURSAL CENTRO JILOTEPEC**
PARQUE INDUSTRIAL # 1, COL. PARQUE INDUSTRIAL
JILOTEPEC, JILOTEPEC, EDO. DE MÉX. C.P. 54257
TEL: 761 782 9101 EXT. 5728 Y 5102

GUANAJUATO **CÍA. FERRETERA NUEVO MUNDO S.A. DE C.V.**
AV. MÉXICO - JAPÓN #225, CD. INDUSTRIAL, C.P. 38010,
CELAYA, GTO. TEL.: 461 617 7578 / 79 / 80 / 88

GUERRERO **CENTRO DE SERVICIO ECLIPSE**
CALLE PRINCIPAL MZ.1 LT. 1, COL. SANTA FE, C.P. 39010,
CHILPANCINGO, GRO. TEL.: 747 478 5793

HIDALGO **FERREPRECIOS S.A. DE C.V.**
LIBERTAD ORIENTE #304 LOCAL 30, INTERIOR DE PASAJE
ROBLEDO, COL. CENTRO, C.P. 43600, TULANCINGO,
HGO. TEL.: 775 753 6615 / 775 753 6616

JALISCO **SUCURSAL GUADALAJARA**
AV. ADOLFO B. HORN # 6800, COL: SANTA CRUZ DEL
VALLE, C.P.: 45655, TLAJOMULCO DE ZÚNIGA, JAL.
TEL.: 33 3606 5285 AL 90

MICHOACÁN **FIX FERRETERÍAS**
AV. PASEO DE LA REPÚBLICA #3140-A, COL.
EX-HACIENDA DE LA HUERTA, C.P. 58050, MORELIA,
MICH. TEL.: 443 334 6858

MORELOS **FIX FERRETERÍAS**
CAPITÁN ANZÚRES #95, ESQ. JOSÉ PERDIZ,
COL. CENTRO, C.P. 62740, CUAUTLA, MOR.
TEL.: 735 352 8931

NAYARIT **HERRAMIENTAS DE TEPIC**
MAZATLAN #117, COL. CENTRO, C.P. 63000,
TEPIC, NAY. TEL.: 311 258 0540

NEUVO LEÓN **SUCURSAL MONTERREY**
CARRETERA LAREDO #300, 1B MONTERREY PARKS,
COLONIA PUERTA DE ANAHUAC, C.P. 66052, ESCOBEDO,
NUEVO LEÓN, TEL.: 81 8352 8791 / 81 8352 8790

OAXACA **FIX FERRETERÍAS**
AV. 20 DE NOVIEMBRE #910, COL. CENTRO, C.P. 68300,
TUXTEPEC, OAX. TEL.: 287 106 3092

PUEBLA **SUCURSAL PUEBLA**
AV. PERIFÉRICO #2-A, SAN LORENZO ALMECATLA,
C.P. 72710, CUAUTLACINGO, PUE.
TEL.: 222 282 8282 / 84 / 85 / 86

QUERÉTARO **ARU HERRAMIENTAS S.A. DE C.V.**
AV. PUERTO DE VERACRUZ #110, COL. RANCHO DE
ENMEDIO, C.P. 76842, SAN JUAN DEL RÍO, QRO.
TEL.: 427 268 4544

QUINTANA ROO **FIX FERRETERÍAS**
CARRETERA FEDERAL MZ. 46 LT. 3 LOCAL 2,
COL. EJIDAL, C.P. 77710 PLAYA DEL CARMEN, Q.R.
TEL.: 984 267 3140

SAN LUIS POTOSÍ **FIX FERRETERÍAS**
AV. UNIVERSIDAD #1850, COL. EL PASEO, C.P. 78320,
SAN LUIS POTOSÍ, S.L.P. TEL.: 444 822 4341

SINALOA **SUCURSAL CULIACÁN**
AV. JESÚS KUMATE SUR #4301, COL. HACIENDA
DE LA MORA, C.P. 80143, CULIACÁN, SIN.
TEL.: 667 173 9139 / 173 8400

SONORA **FIX FERRETERÍAS**
CALLE 5 DE FEBRERO #517, SUR LT. 25 MZ. 10,
COL. CENTRO, C.P. 85000, CD. OBREGÓN, SON.
TEL.: 644 413 2392

TABASCO **SUCURSAL VILLAHERMOSA**
CALLE HELIO LOTES 1, 2 Y 3 MZ. #1, COL. INDUSTRIAL,
2A ETAPA, C.P. 86010, VILLAHERMOSA, TAB.
TEL.: 993 353 7244

TAMAULIPAS **VM ORINGS Y REFACCIONES**
CALLE ROSITA #527 ENTRE 20 DE NOVIEMBRE Y GRAL.
RODRÍGUEZ, FRACC. REYNOSA, C.P. 88780, REYNOSA,
TAMS. TEL.: 899 926 7552

TLAXCALA **SERVICIOS Y HERRAMIENTAS INDUSTRIALES**
PABLO SIDAR #132, COL. BARRIO DE SAN BARTOLOMÉ,
C.P. 90970, SAN PABLO DEL MONTE, TLAX.
TEL.: 222 271 7502

VERACRUZ **LA CASA DISTRIBUIDORA TRUPER**
BLVD. PRIMAVERA, ESQ. HORTENSIA S/N,
COL. PRIMAVERA, C.P. 93308, POZA RICA, VER.
TEL.: 782 823 8100 / 826 8484

YUCATÁN **SUCURSAL MÉRIDA**
CALLE 33 #600 Y 602, LOCALIDAD ITZINCAB Y MULSAV,
MPIO. UMAN, C.P. 97390, MÉRIDA, YUC.
TEL.: 999 912 2451

Codes	Models	Brand
102859	CALI-20A	TRUPER PRO
103260	CALI-20AS	

Warranty. Duration: 3 year. Coverage: parts, components and workmanship against manufacturing or operating defects, except if used under conditions other than normal; when it was not operated in accordance with the instructive; was altered or repaired by personnel not authorized by TRUPER®. To make the warranty valid, present the product, stamped policy or invoice or receipt or voucher, in the establishment where you bought it or in Corregidora 35, Centro, Cuauhtémoc, CDMX, 06060, where you can also purchase parts, components, consumables and accessories. It includes the costs of transportation of the product that derive from its fulfillment of its service network. . Phone number 800-018-7873. Made in China. Imported by TRUPER, S.A. de C.V. Parque Industrial 1, Parque Industrial Jilotepec, Jilotepec, Edo. de Méx. C.P. 54257, Phone number 761 782 9100.

Stamp of the business. Delivery date:

